

## Effect of Er,Cr:YSGG laser irradiation on apical sealing ability of calcium silicate-containing endodontic materials in root-end cavities

Emel Olga ONAY<sup>1</sup>, Christos GOGOS<sup>2</sup>, Mete UNGOR<sup>1</sup>, Nikolaos ECONOMIDES<sup>2</sup>, Vasileios LYSSARIS<sup>2</sup>, Ersin OGUS<sup>3</sup> and Theodoros LAMBRIANIDIS<sup>2</sup>

<sup>1</sup> Department of Endodontics, Baskent University, School of Dentistry, 82. sok. No. 26, Bahcelievler 06490, Ankara, Turkey

<sup>2</sup> Department of Endodontology, Aristotle University, School of Dentistry, University Campus, Thessaloniki 54006, Greece

<sup>3</sup> Department of Biostatistics, Baskent University, School of Medicine, University Campus, Baglica 06810, Ankara, Turkey

Corresponding author, Emel Olga ONAY; E-mail: eonay@baskent.edu.tr

The aim of this research was to evaluate the apical sealing abilities of 60 root-end cavities filled with mineral trioxide aggregate (MTA) and iRoot BP cements after treated with either 17% EDTA solution or Er,Cr:YSGG laser irradiation. After the filling procedure, apical leakage quantity was measured at 4 weeks using a fluid filtration method. One root from each group was processed for scanning electron microscopy and energy dispersive X-ray spectroscopy analyses. Both EDTA/MTA and laser irradiation/MTA combinations showed significantly lower microleakage than EDTA/iRoot BP and laser irradiation/iRoot BP combinations ( $p < 0.05$ ). Between groups of the same filling material, there were no significant differences among specimens treated with EDTA or laser ( $p > 0.05$ ). Both MTA and iRoot-BP demonstrated tag-like structures within the dentinal tubules when used in conjunction with EDTA.

**Keywords:** Calcium silicate-containing biomaterials, Er,Cr:YSGG laser, Fluid filtration method, Mineral trioxide aggregate, Root-end filling

### INTRODUCTION

Nonsurgical endodontic treatment is a highly predictable treatment option in most cases. However, periapical surgery is indicated for teeth with persistent periradicular pathosis unresponsive to nonsurgical approaches or when nonsurgical retreatment is impossible<sup>1,2</sup>. Resection and retrograde preparation of the root canal is followed by placement of a retrograde filling material to seal the apical canal anatomy<sup>2</sup>. An ideal root-end cavity preparation can be best described as a Class I cavity of at least 3 mm depth with parallel walls<sup>3</sup>. For root-end cavity preparations, a microhandpiece with a rotating bur has been the traditional tool of choice for many years. With the advent of ultrasonic tips, they have since become the standard tool of choice. This technique offers various benefits: minimal or no bevel after root-end resection, smaller cavities with more preservation of dental material, deeper and more consistent root-end cavity preparations, and better preparation of root canals with difficult anatomic structures (such as an isthmus)<sup>4</sup>.

In endodontic therapy, root dentin permeability is an important consideration. In endodontic treatment, lasers have been used as an alternative for root-end cavity preparations. To increase dentin permeability and improve apical sealing after canal obturation, different types of lasers have been suggested for smear layer removal and melting and solidification of root canal dentin walls<sup>5-8</sup>.

During the surgical procedure, a root-end filling is key to providing an apical seal that prevents the penetration of bacteria or diffusion of bacterial products from the leaking root canal system into the periapical tissues<sup>9,10</sup>. Mineral trioxide aggregate (ProRoot MTA,

Dentsply Tulsa Dental Specialties, Tulsa, OK, USA) has shown promising results as a root-end filling material because of its sealing properties<sup>11,12</sup>, bioactivity<sup>13</sup>, and cementogenesis potential<sup>14</sup>. It has rapidly become the 'gold' standard for root-end filling materials<sup>15</sup>. However, poor handling characteristics, initial looseness, and slow setting time make MTA difficult to use<sup>16</sup>.

Recently, a calcium silicate-containing bioceramic cement (iRoot BP, Innovative BioCeramix Inc., Vancouver, BC, Canada) is introduced to the market. It is available either in a premixed moldable putty form (iRoot BP Plus) or packaged in a preloaded syringe (iRoot BP) and supplied with disposable tips. These hydraulic materials are recommended for perforation and root resorption repair, root-end filling, apexification, and pulp capping. The manufacturer claimed that these novel materials possess physical and mechanical properties comparable to those of MTA, but with improved handling characteristics and shorter setting times.

Apical leakage remains a top-priority consideration when evaluating new root-end filling materials<sup>17-19</sup>. Thus, the objective of this study was to evaluate the *in vitro* apical sealing abilities of root-end cavities filled with MTA and iRoot BP cements at 4 weeks after treated with either 17% EDTA solution or Er,Cr:YSGG laser irradiation. The null hypotheses tested were that Er,Cr:YSGG laser treatment would not influence the sealing ability of the filling materials compared with EDTA application and that the sealing ability of iRoot BP would not be superior to that of MTA.

### MATERIALS AND METHODS

This study was approved by the Baskent University Institutional Review Board (Project No. D-DA11/04). A

total of 70 extracted, single-rooted, human teeth were used. Each tooth was placed in sodium hypochlorite (NaOCl) for 2 h for surface disinfection, and then stored in distilled water until its use. Standard access cavities were prepared, and the canal orifices located and apical patency confirmed with a size 15 K-file (Maillefer, Ballaigues, Switzerland). Working length was established at 1 mm from the apex. Middle and coronal thirds were prepared using Gates Glidden drills (Produits Dentaires S.A., Vevey, Switzerland) of ISO sizes 1-4. All teeth were instrumented using a crown-down technique with a set of ProTaper rotary instruments (Dentsply Maillefer, Ballaigues, Switzerland) as follows. S1 hand file (0.17 mm tip diameter; variable taper) was taken into the canal just short of the depth at which the hand file was taken previously. The other files were used in the following sequence, and all were advanced to working length: S2 (0.20 mm tip diameter; variable taper), F1 (0.20 mm tip diameter; 7% taper), F2 (0.25 mm tip diameter; 8% taper), F3 (0.30 mm tip diameter; 9% taper), and F4 (0.40 mm tip diameter; 6% taper) to achieve apical preparation of size #40. Two milliliters of 2.5% NaOCl was used for irrigation between each instrument change. Smear layer was removed during instrumentation with 2 mL of 17% EDTA (pH 7.4). Finally, root canals were successively flushed with 5 mL of 2.5% NaOCl, 5 mL of 17% EDTA, and 3 mL of distilled water. Crowns were sectioned using a water-cooled diamond disk to standardize the root length at 14 mm.

#### Root-end resection and preparation

The apical 3 mm of each instrumented root was resected 90° to the longitudinal axis of the root. To provide an intracanal matrix, a prefitted gutta-percha cone (Dentsply Maillefer, Ballaigues, Switzerland) was inserted into the root canal leaving a root-end void of 3 mm, which served as a barrier for root-end filling material placement. A provisional restoration (IRM, Caulk, Dentsply, Milford, DE, USA) was placed in the coronal access cavity to stabilize the gutta-percha cone. Root-end cavities were prepared to a depth of 3 mm using ultrasonic tips (S12/90°D, Satelec, Merignac Cedex, France) powered by an ultrasonic unit (Suprasson P5

Booster; Satelec, F-33708, Merignac Cedex, France).

The roots were randomly divided into six groups: four experimental groups of 15 roots each and two control groups of five roots each. In Groups 1 and 2, the resected and ultrasonically prepared root-end cavities were rinsed with 5 mL of 17% EDTA for 3 min. In Groups 3 and 4, root-end cavities were treated with 40 s of Er,Cr:YSGG laser (Biolase Technology, San Clemente, CA, USA) using a 400- $\mu$ m endodontic fiber tip (MZ4, Biolase Technology, San Clemente, CA, USA) with these operating parameters: 1.25 W, 20 pulses per s, 25% water, and 35% air. Finally, all root-end cavities were irrigated with 2 mL of distilled water and obturated with one of the filling materials:

Group 1 (without irradiation): Retrofilled with MTA

Group 2 (without irradiation): Retrofilled with iRoot BP

Group 3 (with irradiation): Retrofilled with MTA

Group 4 (with irradiation): Retrofilled with iRoot BP

In the negative control group (Group 5), roots were filled a single gutta-percha cone without a root canal sealer and root-ends were neither filled nor covered. In the positive control group (Group 6), two layers of nail varnish were applied over the root surfaces of teeth with intact crowns.

All retrofilling materials were prepared according to manufacturers' instructions and condensed using a microplugger (Obtura Spartan, Fenton, MO, USA). Adequacy of root-end fillings was verified using both buccolingual and mesiodistal radiographs. All specimens were stored at 37°C with 100% humidity for 4 weeks. However, after the initial set (48 h) of the tested filling materials, the gutta-percha cone was removed from each root canal except for root canals in the negative control group (Group 5).

#### Microleakage evaluation

Microleakage of the retrofilled roots was evaluated by using a modified fluid filtration method (Fig. 1), as reported by Pashley and Depew<sup>20</sup>. In the experimental groups (Groups 1 to 4), external root surfaces were

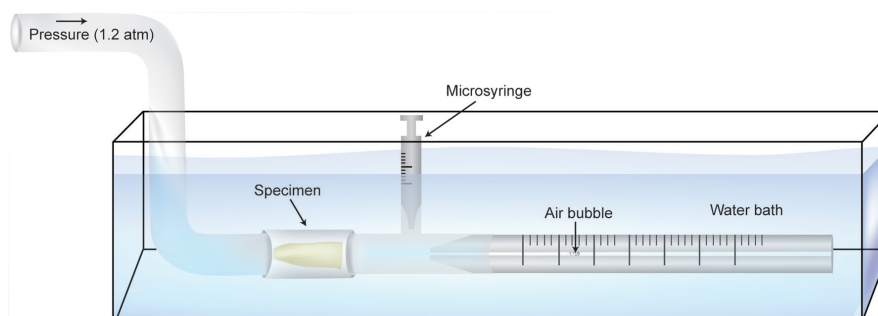


Fig. 1 Schematic illustration of the modified fluid filtration model used in this study.

coated with two layers of nail varnish up to 3 mm below each resected root end. Each root section specimen was connected to a plastic tube, which was filled with distilled water from either side of the specimen. A 20- $\mu$ L glass capillary tube was connected to the plastic tube on the outlet side of the specimen. Using a syringe, water was retracted approximately 2 mm into the open end of the glass capillary tube. The whole set-up was placed in a water bath (20°C), and the syringe was used to adjust the air bubble to a suitable position within the capillary tube. A pressure of 120 kPa (1.2 atm) was applied at the apical side. A 5-min pressurization preload of the system was completed before readings were taken. Fluid movement was measured at 2-min intervals for a total of 8 min, and then the measurements were averaged. Microleakage quantity was expressed as  $\mu$ L/cm H<sub>2</sub>O per min.

#### Scanning electron microscope (SEM) evaluation

At the end of week 1, one root from each experimental group was selected for SEM analysis. Each root was cross-sectioned into 4-mm-thick segments. Specimen preparation for SEM observation followed a routine procedure: specimens were fixed in 10% buffered formaldehyde overnight, dehydrated through ascending concentrations of alcohol up to 100% alcohol, and finally critical-point dried (Bio-Rad E3000, Bio-Rad Microscience Ltd., Hertfordshire, UK). Specimens were mounted in stubs, sputter-coated with gold, and then observed under SEM (JSM-840A, Jeol Co., Akishima, Tokyo, Japan) to assess the contact and adaptation between root canal walls and filling materials and the presence of intratubular mineralization. In some specimens, elemental compositions of the interfacial layer and intratubular mineralization were investigated using energy dispersive X-ray spectroscopy (EDS) with SEM (JSM-840A, Jeol Co., Akishima, Tokyo, Japan).

#### Statistical analysis

For statistical analysis, normality was tested using the Shapiro-Wilk test. Levene's test was performed to test for homogeneity of variances. Variables were found to be heterogeneous, and data were analyzed using non-parametric statistical analysis, Mann-Whitney U test. All analyses were performed using SPSS statistical package for Windows, version 17.0 (September 2012;

license number: 1093910, Baskent University). All levels of significance were set at  $\alpha=0.05$ .

## RESULTS

Table 1 shows the means and standard deviations of the microleakage values of tested root-end filling materials. EDTA/MTA combination exhibited the least microleakage, and laser irradiation/MTA combination ranked second in this regard. Both combinations showed significantly lower microleakage values than EDTA/iRoot BP and laser irradiation/iRoot BP combinations ( $p<0.05$ ). Between groups of the same filling material, there were no significant differences among specimens treated with EDTA or laser ( $p>0.05$ ).

The negative controls showed extreme apical leakage with values exceeding the capillary tube length. The positive controls registered no detectable bubble movement at 1.2 atm.

SEM observations agreed with the fluid filtration analysis. Root-end cavities treated with EDTA/MTA (Group 1) and laser irradiation/MTA (Group 3) showed best adaptation to the apical root canal walls. In Group 2 (EDTA/iRoot BP) and Group 4 (laser irradiation/iRoot BP), lack of continuity between the filling material and root canal walls increased in direct proportion to their higher microleakage values (Fig. 2).

Representative SEM images of Group 1 (EDTA/MTA) and Group 2 (EDTA/iRoot BP) also showed intratubular mineralization (tag-like structures) within the dentinal tubules just beneath the dentin-filling material interface. EDS analysis of the elemental compositions of these tags revealed mainly the presence of calcium, phosphorus, and oxygen for Group 1 (EDTA/MTA), and calcium, silicon, zirconium, tantalum, and oxygen for Group 2 (EDTA/iRoot BP) (Fig. 3).

## DISCUSSION

In light of the current findings, the null hypotheses of this study were accepted: Er,Cr:YSGG laser treatment would not influence the sealing ability of the filling materials when compared with EDTA application and that the sealing ability of iRoot BP would not be superior to that of MTA.

Various studies have evaluated the effects of

Table 1 Mean microleakage ( $\mu$ L/cmH<sub>2</sub>O/min<sup>-1.2 atm</sup>) values and standard deviations (SD) for experimental groups. Groups identified by the same superscript letters are not significantly different ( $p>0.05$ ). Different superscript letters identify significantly different groups ( $p<0.05$ ).

Materials	Mean microleakage (SD) ( $\mu$ L min <sup>-1</sup> cmH <sub>2</sub> O <sup>-1</sup> )
Group 1 (EDTA/MTA)	0.000058 (0.000115) <sup>a</sup>
Group 2 (EDTA/iRoot BP)	0.017754 (0.021289) <sup>b</sup>
Group 3 (laser irradiation/MTA)	0.000941 (0.002787) <sup>a</sup>
Group 4 (laser irradiation/iRoot BP)	0.044051 (0.063452) <sup>b</sup>

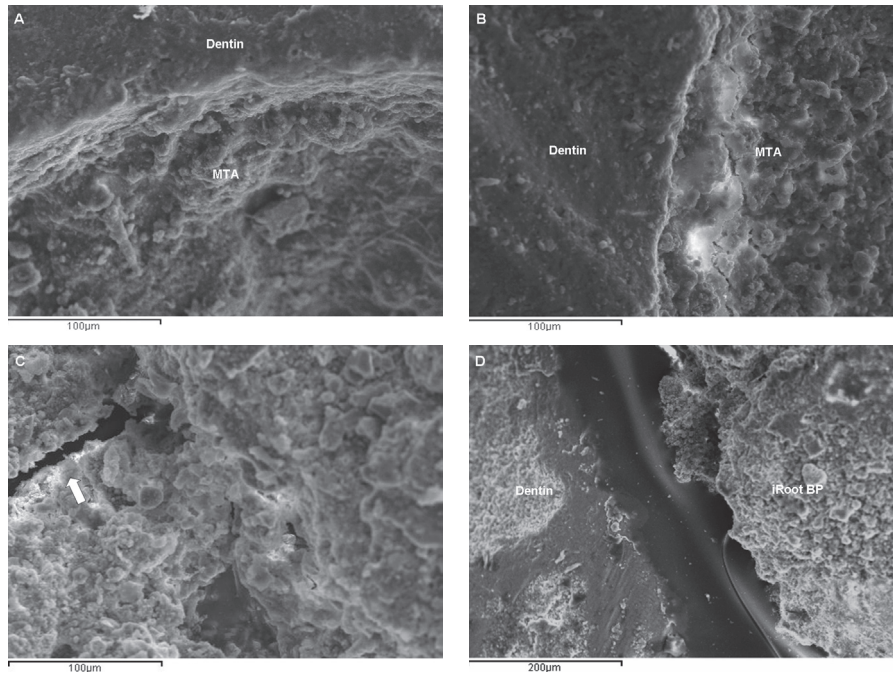


Fig. 2 Representative SEM micrographs of Group 1 (EDTA/MTA) (A) and Group 3 (laser irradiation/MTA) (B) reveal good adaptation of MTA filling to root dentin. Representative SEM micrograph of Group 2 (EDTA/iRoot BP) shows a gap (white arrowhead) inside the filling material (C). Representative micrograph of Group 4 (laser irradiation/iRoot BP) (D) shows an area of evident interfacial separation between the filling material and root dentin.

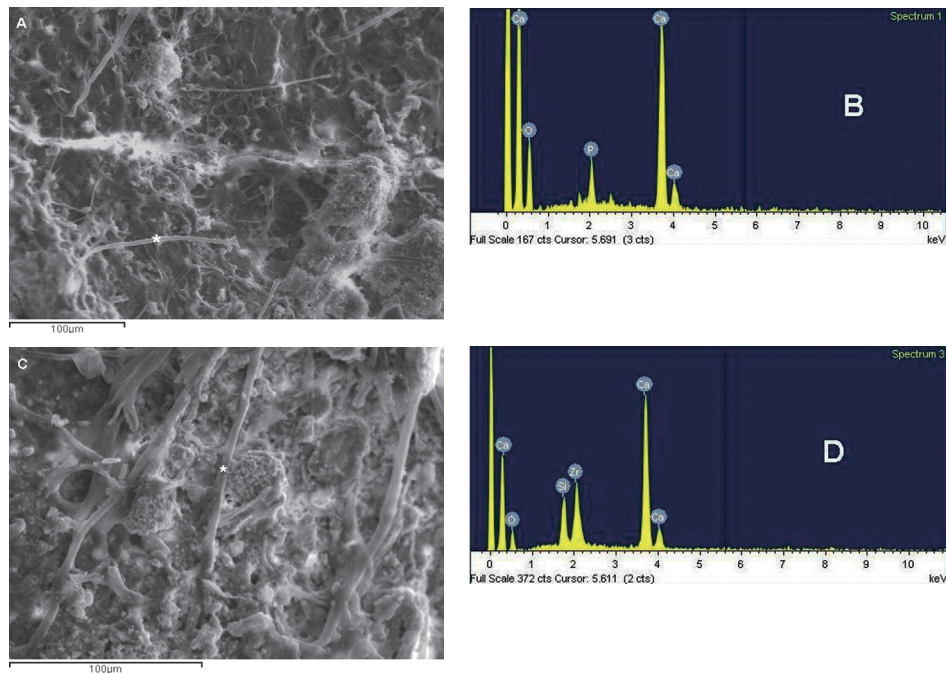


Fig. 3 Representative SEM micrographs of Group 1 (EDTA/MTA) (A) and Group 2 (EDTA/iRoot BP) (C) show intratubular mineralization with tag-like structures. EDS analyses (B and D) reveal the elemental compositions of intratubular mineralization seen in (A) and (C) respectively (area marked with \*).

erbium-type lasers on microleakage. Controversy remains as to whether or not smear layer removal with laser application is necessary before root-end filling procedure to promote sealing ability. Karlovic *et al.*<sup>7)</sup> and Kocak *et al.*<sup>21)</sup> showed that MTA-filled root-end cavities prepared by Er:YAG laser had significantly lower microleakage than those prepared using ultrasonic devices. However, in the absence of smear layers, there seemed to be no apparent advantages in the use of Er,Cr:YSGG laser over conventional root-end cavity preparation methods to address apical microleakage of root-end fillings<sup>22,23)</sup>. In agreement with the results of these studies, Er,Cr:YSGG laser treatment did not influence the sealing ability of the root-end filling materials tested in this study when compared with EDTA application.

Recent studies on calcium silicate-containing biomaterials showed that they yielded comparable results to MTA, and the authors also concluded that these biomaterials offered no apparent advantages over MTA<sup>19,24)</sup>. In the present study, comparison of groups with the same smear layer removal method yielded the same results. Group 1 (EDTA/MTA) had higher sealing ability than Group 2 (EDTA/iRoot BP), and Group 3 (laser irradiation/MTA) had higher sealing ability than Group 4 (laser irradiation/iRoot BP). Consistent with the findings of previous studies<sup>19,24)</sup>, our results based on fluid filtration method showed that iRoot BP did not provide a better seal than MTA.

The mechanism by which MTA provides superior sealing ability is not completely understood. Sarkar *et al.*<sup>13)</sup> analyzed the interactions of MTA with a synthetic tissue fluid and root canal dentin, and suggested that MTA initially produced a mechanical seal. MTA then dissolved, leading to the formation of hydroxyapatite crystals which reacted with dentin to create a chemical adhesion<sup>19)</sup>.

Representative SEM images of Group 1 (EDTA/MTA) and Group 2 (EDTA/iRoot BP) showed tag-like structures within the dentinal tubules just beneath the dentin-filling material interface. These tags were previously reported when root-end cavities were filled with MTA<sup>25)</sup> or a calcium silicate-based coronal restorative material (Biodentine, Septodont, Saint Maur des Fosses, France)<sup>26,27)</sup>. Following hydration, the flowable consistency of these filling materials aided their penetration through opened dentinal tubules to crystallize *in situ* over time<sup>28)</sup>.

However, the SEM images of iRoot BP specimens also showed gap-containing segments along the dentin-filling material interface and within the material itself. A problem encountered in this study was the inability to achieve complete setting of iRoot BP filling material. These gaps might be associated with its long setting time, which then led to material washout during setting. In pilot studies, it was observed that this material started to set only when completely covered with water<sup>29)</sup>. A recent study reported that EndoSequence Root Repair Material (marketed as iRoot BP in Canada; Brasseler USA, Savannah, GA,

USA) incubated at 37°C in 100% humidity was unable to withstand a 500-g load until after a duration of 168 h (7 days)<sup>30)</sup>. This has important clinical implications, especially where apical surgeries are involved, in that any unset material may be washed out by tissue fluids and blood in the surgical field and consequently lead to microleakage and treatment failure.

Our results based on fluid filtration method and SEM evaluation suggested that the root canal adaptation and sealing ability of MTA were superior to that of iRoot BP cement when used as a root-end filling material *in vitro*. Er,Cr:YSGG laser treatment did not enhance the sealing ability of the filling materials when compared with EDTA application.

Good long-term sealing capability is a pivotal quality of endodontic materials. Although a clear correlation between *in vitro* and *in vivo* biocompatibility was already described for MTA, further investigations for iRoot BP cement on its biocompatibility, dimensional stability, and bone formation induction need to be performed to establish consensus on the clinical performance of this material.

#### ACKNOWLEDGMENTS

This study was supported by the Baskent University Research Fund (Project No. D-DA11/04) and was presented at the 6th International Association of Dental Research Pan-European Region (IADR/PEF) Meeting in Helsinki, Finland, on September 2012.

The authors would like to thank Mr. Enver Atali and Mr. Aslan Atali for their extensive help in technical support and for their generous material support to this work.

#### REFERENCES

- 1) Gutmann JL. Surgical endodontics: quo vadis? *Endod Topics* 2005; 11: 1-3.
- 2) Kim S, Kratchman S. Modern endodontic surgery concepts and practice: a review. *J Endod* 2006; 32: 601-623.
- 3) Johnson BR, Fayad MI, Witherspoon DE. In: Hargreaves KM, Cohen S, Berman LH, editors. *Cohen's pathways of the pulp*. 10th ed. St Louis: Mosby Elsevier; 2011. pp. 720-776.
- 4) de Lange J, Putters T, Baas EM, van Ingen JM. Ultrasonic root-end preparation in apical surgery: a prospective randomized study. *Oral Surg Oral Med Oral Pathol Oral Radiol Endod* 2007; 104: 841-845.
- 5) Bader G, Lejeune S. Prospective study of two retrograde endodontic apical preparations with and without the use of CO<sub>2</sub> laser. *Endod Dent Traumatol* 1998; 14: 75-78.
- 6) Aranha AC, Domingues FB, Franco VO, Gutknecht N, Eduardo Cde P. Effects of Er:YAG and Nd:YAG lasers on dentin permeability in root surfaces: a preliminary *in vitro* study. *Photomed Laser Surg* 2005; 23: 504-508.
- 7) Karlovic Z, Pezelj-Ribaric S, Miletic I, Jukic S, Grgurevic J, Anic I. Erbium:YAG laser *versus* ultrasonic in preparation of root-end cavities. *J Endod* 2005; 31: 821-823.
- 8) de Souza EB, de Amorim CV, Marques JL. Effect of diode laser irradiation on the apical sealing of MTA retrofills. *Braz Oral Res* 2006; 20: 231-234.
- 9) Gutmann JL, Pitt Ford TR. Management of the resected root end: a clinical review. *Int Endod J* 1993; 26: 273-283.
- 10) Rubinstein RA, Kim S. Long-term follow-up of cases

- considered healed one year after apical microsurgery. *J Endod* 2002; 28: 378-383.
- 11) Torabinejad M, Watson TF, Pitt Ford TR. Sealing ability of a mineral trioxide aggregate when used as a root end filling material. *J Endod* 1993; 19: 591-595.
  - 12) Fischer EJ, Arens DE, Miller CH. Bacterial leakage of mineral trioxide aggregate as compared with zinc-free amalgam, intermediate restorative material, and Super-EBA as a root-end filling material. *J Endod* 1998; 24: 176-179.
  - 13) Sarkar NK, Caicedo R, Ritwik P, Moiseyeva R, Kawashima I. Physicochemical basis of the biologic properties of mineral trioxide aggregate. *J Endod* 2005; 31: 97-100.
  - 14) Baek SH, Plenck H Jr, Kim S. Periapical tissue responses and cementum regeneration with amalgam, SuperEBA, and MTA as root-end filling materials. *J Endod* 2005; 31: 444-449.
  - 15) Bodrumlu E. Biocompatibility of retrograde root filling materials: a review. *Aust Endod J* 2008; 34: 30-35.
  - 16) Ber BS, Hatton JF, Stewart GP. Chemical modification of ProRoot MTA to improve handling characteristics and decrease setting time. *J Endod* 2007; 33: 1231-1234.
  - 17) Maltezos C, Glickman GN, Ezzo P, He J. Comparison of the sealing of Resilon, Pro Root MTA, and Super-EBA as root-end filling materials: a bacterial leakage study. *J Endod* 2006; 32: 324-327.
  - 18) Gandolfi MG, Sauro S, Mannocci F, Watson TF, Zanna S, Capoferri M, Prati C, Mongiorgi R. New tetrasilicate cements as retrograde filling material: an *in vitro* study on fluid penetration. *J Endod* 2007; 33: 742-745.
  - 19) Leal F, De-Deus G, Brandao C, Luna AS, Fidel SR, Souza EM. Comparison of the root-end seal provided by bioceramic repair cements and White MTA. *Int Endod J* 2011; 44: 662-668.
  - 20) Pashley DH, Depew DD. Effects of the smear layer, Copalite and oxalate on microleakage. *Oper Dent* 1986; 11: 95-102.
  - 21) Kocak MM, Kocak S, Aktuna S, Görücü J, Yaman SD. Sealing ability of retrofilling materials following various root-end cavity preparation techniques. *Lasers Med Sci* 2011; 26: 427-431.
  - 22) Winik R, Araki AT, Negrao JAA, Bello-Silva MS, Lage-Marques JL. Sealer penetration and marginal permeability after apicoectomy varying retrocavity preparation and retrofilling material. *Braz Dent J* 2006; 17: 323-327.
  - 23) Çahşkan MK, Parlar NK, Oruçoğlu H, Aydın B. Apical microleakage of root-end cavities prepared by Er,Cr:YSGG laser. *Lasers Med Sci* 2010; 25: 145-150.
  - 24) Nair U, Ghattas S, Saber M, Natera M, Walker C, Pileggi R. A comparative evaluation of the sealing ability of 2 root-end filling materials: an *in vitro* leakage study using *Enterococcus faecalis*. *Oral Surg Oral Med Oral Pathol Oral Radiol Endod* 2011; 112: e74-e77.
  - 25) Reyes-Carmona JF, Felipe MS, Felipe WT. Biomineralization ability and interaction of mineral trioxide aggregate and white Portland cement with dentin in a phosphate-containing fluid. *J Endod* 2009; 35: 731-736.
  - 26) Han L, Okiji T. Uptake of calcium and silicon released from calcium silicate-based endodontic materials into root canal dentine. *Int Endod J* 2011; 44: 1081-1087.
  - 27) Atmeh AR, Chong EZ, Richard G, Festy F, Watson TF. Dentin-cement interfacial interaction: calcium silicates and polyalkenoates. *J Dent Res* 2012; 91: 454-459.
  - 28) Weller RN, Tay KC, Garrett LV, Mai S, Primus CM, Gutmann JL, Pashley DH, Tay FR. Microscopic appearance and apical seal of root canals filled with gutta-percha and ProRoot Endo Sealer after immersion in a phosphate-containing fluid. *Int Endod J* 2008; 41: 977-986.
  - 29) Lovato KF, Sedgley CM. Antibacterial activity of EndoSequence root repair material and ProRoot MTA against clinical isolates of *Enterococcus faecalis*. *J Endod* 2011; 37: 1542-1546.
  - 30) Damas BA, Wheeler MA, Bringas JS, Hoen MM. Cytotoxicity comparison of mineral trioxide aggregates and EndoSequence bioceramic root repair materials. *J Endod* 2011; 37: 372-375.