



Rational and design of EuroCRT: an international observational study on multi-modality imaging and cardiac resynchronization therapy

Erwan Donal^{1,2*}, Victoria Delgado³, Julien Magne^{4,5}, Chiara Bucciarelli-Ducci⁶, Christophe Leclercq^{1,2}, Bernard Cosyns⁷, Marta Sitges⁸, Thor Edvardsen⁹, Elif Sade¹⁰, Ivan Stankovic¹¹, Eustachio Agricola¹², Maurizio Galderisi¹³, Patrizio Lancellotti^{14,15}, Alfredo Hernandez², Sven Plein¹⁶, Denisa Muraru¹⁷, Ehud Schwammenthal¹⁸, Gerhard Hindricks¹⁹, Bogdan A. Popescu²⁰, and Gilbert Habib^{21,2}

¹Cardiology, Rennes University Hospital, INSERM 1414 Clinical Investigation Center, Innovative Technology, 2 Rue Henri Le Guilloux, CHU Pontchaillou, Rennes F-35000, France; ²LTSI, Université de Rennes—INSERM, UMR 1099, Rennes, France; ³Department of Cardiology, Leiden University Medical Center, Leiden, The Netherlands; ⁴CHU Limoges, Hôpital Dupuytren, Cardiologie, Limoges, France; ⁵INSERM 1094, Faculté de médecine de Limoges, 2, rue Marcland, 87000 Limoges, France; ⁶Bristol Heart Institute, Bristol NIHR Cardiovascular Biomedical Research Unity, University of Bristol, Bristol, UK; ⁷UZ Brussel-CVHZ, ICMI 1090 Brussels, Belgium; ⁸Cardiovascular Institute, Hospital Clinic, IDIBAPS, University of Barcelona, Barcelona, Spain; ⁹Department of Cardiology, Oslo University Hospital and University of Oslo, Norway; ¹⁰Baskent University, Ankara, Turkey; ¹¹Department of Cardiology, University Clinical Hospital Centre Zemun, Faculty of Medicine, University of Belgrade, Belgrade, Serbia; ¹²Cardiothoracic Department, San Raffaele University Hospital, IRCCS, 20132 Milan, Italy; ¹³Department of Advanced Biomedical Sciences, Federico II University Hospital, Naples, Italy; ¹⁴Department of Cardiology, University of Liège Hospital, GIGA Cardiovascular Sciences, Heart Valve Clinic, CHU Sart Tilman, Liège, Belgium; ¹⁵Gruppo Villa Maria Care and Research, Anthea Hospital, Bari, Italy; ¹⁶Multidisciplinary Cardiovascular Research Centre (MCRC), Leeds Institute of Cardiovascular and Metabolic Medicine University of Leeds, Clarendon Way, Leeds, UK; ¹⁷Department of Cardiac, Thoracic and Vascular Sciences, University of Padua, Padua 35128, Italy; ¹⁸Tel Aviv University Sheba Medical Center, Tel Hashomer, Israel; ¹⁹Department of Electrophysiology, University of Leipzig—Heart Center, Leipzig, Germany; ²⁰University of Medicine and Pharmacy "Carol Davila"—Eurocolab, Institute of Cardiovascular Diseases, Bucharest, Romania; and ²¹Department of Cardiology, Aix-Marseille Université, 13284 Marseille, France

Received 24 January 2017; editorial decision 27 January 2017; accepted 1 February 2017; online publish-ahead-of-print 27 February 2017

Aims

Assessment of left ventricular (LV) volumes and ejection fraction (LVEF) with cardiac imaging is important in the selection of patients for cardiac resynchronization therapy (CRT). Several observational studies have explored the role of imaging-derived LV dyssynchrony parameters to predict the response to CRT, but have yielded inconsistent results, precluding the inclusion of imaging-derived LV dyssynchrony parameters in current guidelines for selection of patients for CRT.

Methods

The EuroCRT is a large European multicentre prospective observational study led by the European Association of Cardiovascular Imaging. We aim to explore if combining the value of cardiac magnetic resonance (CMR) and echocardiography could be beneficial for selecting heart failure patients for CRT in terms of improvement in long-term survival, clinical symptoms, LV function, and volumes. Speckle tracking echocardiography will be used to assess LV dyssynchrony and wasted cardiac work whereas myocardial scar will be assessed with late gadolinium contrast enhanced CMR. All data will be measured in core laboratories. The study will be conducted in European centres with known expertise in both CRT and multimodality cardiac imaging.

Keywords

cardiac resynchronization therapy • cardiac magnetic resonance • echocardiography • strain • observational study

* Corresponding author. Tel: +33 2 99 28 25 07; Fax: +33 2 99 28 25 29. E-mail: erwan.donal@chu-rennes.fr

Published on behalf of the European Society of Cardiology. All rights reserved. © The Author 2017. For permissions, please email: journals.permissions@oup.com.

Introduction

The potential role of cardiac imaging to identify which patients with heart failure benefit from cardiac resynchronization therapy (CRT) has been assessed in several studies.^{1–6} Echocardiography is used to assess left ventricular ejection fraction (LVEF) and volumes according to current guidelines, but echocardiographic measures of cardiac dyssynchrony were considered not sufficiently validated and robust to be implemented in the current guidelines.⁷ Echocardiographic parameters have mostly been tested in single-centre studies with small cohorts and often in retrospective studies.^{8–10} The prospective observational PROSPECT trial showed that the initially proposed echocardiographic parameters of cardiac dyssynchrony had a modest accuracy to predict response to CRT.⁸ Subsequent studies have shown that speckle tracking echocardiography may be a better tool to reliably measure LV dyssynchrony.^{1,11–13} In the normal heart, all LV segments contract in a relatively synchronized fashion and contribute to blood ejection into the aorta. When there is electrical conduction delay, however, early and late activated segments contract at different times and energy might be wasted in stretching opposing segments.^{12,14–16} As observed typically in patients with left bundle branch block, the early activated septum contracts prior to aortic valve opening and stretches the LV lateral wall, and contraction in the late activated lateral wall causes a variable degree of systolic lengthening of the septum.^{1,17,18} The negative work during systolic lengthening makes no contribution to LV ejection, and therefore represents a waste. It has been suggested that the amount of effective (positive) work remaining in the dyssynchronous ventricle reflects the potential for recovery of function after CRT.^{15,16,19} LV pressure–strain loops are a novel and reliable tool for the non-invasive assessment of myocardial work.^{15,16,20} Furthermore, the use of cardiovascular magnetic resonance (CMR) in particular with late gadolinium enhancement (LGE), permits the assessment of myocardial scar which has been associated with poor response to CRT.^{21–23} The combination of LV dyssynchrony assessment with speckle tracking echocardiography and myocardial scar assessment with CMR has shown better accuracy to identify patients who will benefit from CRT.^{21,24,25} However, these single-centre studies included only small cohorts of patients and dyssynchrony was not extensively evaluated.

Therefore, we propose a European international observational study (EuroCRT) to determine the role of multimodality imaging to identify heart failure patients who will benefit from CRT. The objectives of the present study are as follows:

- to explore the combined value of LV mechanical dyssynchrony and wasted cardiac work measured with speckle tracking echocardiography and of myocardial scar measured with LGE-CMR to accurately identify patients who will benefit from CRT
- to test the robustness of this combined approach.

The results of this observational study will constitute a step forward to proposing a new prospective randomized study.

Methods

The EuroCRT survey will be conducted in high-volume centres with specific expertise in the evaluation and treatment of heart failure patients who are candidates for CRT and will be led by the 'Research and

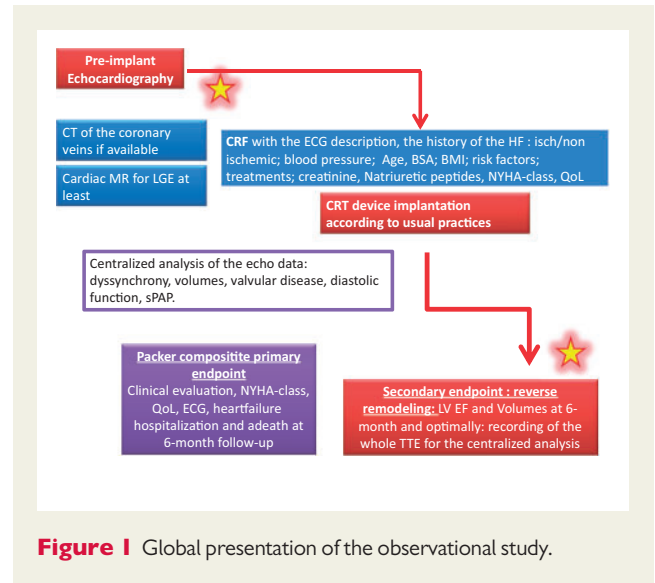


Figure 1 Global presentation of the observational study.

Innovation' Committee of the European Association of Cardiovascular Imaging (EACVI) with the help of the European Heart Rhythm Association (EHRA). The selected centres will be involved in a 12-month inclusion period followed by a 6-month follow-up period. Institutional ethical approval will be requested in each centre according to the local regulations complying with the principles outlined in the Declaration of Helsinki for research in human subjects. Patients should be treated according to the routine practice of each centre. The implantation of the CRT should not be influenced by the data collected.

Study population

Inclusion criteria: patients who are listed on clinical grounds for CRT implantation according to the current European Society of Cardiology guidelines,⁶ and will consent to the study. They will be evaluated before and 6 months after implantation. Patients undergoing upgrades of pacemaker or implantable cardiac defibrillator will also be included.

Exclusion criteria: inappropriate echocardiographic image quality according to the judgment of the investigator; absence of echocardiographic follow-up at 6 months; absence of an indication for CRT according to the current guidelines; general contraindication for CMR (including metallic cerebral clips, non-MR conditional devices) and severe renal dysfunction (glomerular filtration (eGFR) < 30 mL/min/1.73 m²). Patients in atrial fibrillation will also be excluded.

Protocol (Figure 1): The baseline evaluation includes clinical evaluation [New York Heart Association (NYHA) functional class, 6-min walking distance and quality of life], laboratory testing (with specific focus on NT-pro brain natriuretic peptide determination), electrocardiographic (ECG) recording, echocardiographic, and CMR evaluation of cardiac dimensions and function. These investigations will be repeated at 6 months' follow-up. CMR will be repeated at 6 months in patients receiving a CMR-conditional or compatible device.

Clinical information including cardiovascular risk factors, ECG and biological marker (creatinine, haemoglobin, sodium, NT-proBNP) will be collected (Table 1). The ECG will be analysed and rhythm, PR interval duration, QRS complexes of the Electrocardiogram (QRS) axis, duration, and morphology will be recorded according to guidelines.²⁶

Before implantation of the CRT device, patients will be imaged by transthoracic echocardiography according to a predefined acquisition protocol (Table 2)^{27,28} using the same ultrasound platform (ViVid E9, S70

Table 1 Clinical parameters to be recorded

Parameters	Before implantation	Six-month follow-up
Age	+	+
Body mass index	+	+
Systolic blood pressure	+	+
Diastolic blood pressure	+	+
Heart rate	+	+
NYHA class	+	+
Six-minute walk test distance	+	+
Creatinine (micromole/l)	+	+
Haemoglobin (g/dl)	+	+
NT-proBNP (pg/ml)	+	+
ACEI/Sartan-dosage/day	+	+
Beta-blocker dosage/day	+	+
Diuretic dosage/day	+	+
MRA dosage/day	+	+
Ischaemicaetiology (Y/N)	+	+
Heart failure decompensation (Y/N before implant and during the 6-months of follow-up)	+	+

NYHA, New York Heart Association; MRA, mineralocorticoid receptor antagonists.

or E95, General Electric Healthcare, Horten, Norway). During echocardiography, the ECG-trace recording will be carefully optimized to ensure good visualization of the QRS onset throughout the echocardiographic assessment. The frame rate of the images should be 50–90 Hz. The image quality should be optimized to get the best visualization of the endocardial and epicardial borders. At least three cardiac cycles will be acquired. In addition to conventional grey scale images, contrast agents for cavity opacification will be allowed when needed to obtain optimal determination of LV volumes and LVEF. Echocardiography will be interpreted on site, the exam will be centralized using a web-platform (ASCENT: automated anonymization, and the same recording parameters with a specific password for each co-investigator), and a centralized analysis (Inserm 1414 Clinical Investigation Center, Innovative Technology, Rennes, F-35000) will be performed.

CMR will be performed before device implantation using standard CMR scanners (1.5 and 3T) with cardiac software. In patients who undergo implantation of an MR-conditional CRT device, CMR will be repeated at 6-month post-implantation. All CMR studies will be performed according to a predefined CMR acquisition protocol detailed below, and all anonymized data will be sent and analysed by the Bristol CMR Unit core-lab. Images will be analysed by an expert operator ESC CMR level III certified using a commercially available software (CMR42, Circle Cardiovascular Imaging, Calgary, Canada).

CRT-procedure will be performed as per local standard operating procedures. The post-implant period will be managed according to the local procedures in each centre.

Study end points. At 12 month, the primary endpoint will be a reduction in left ventricular end-systolic volume of $\geq 15\%$ (i.e. LV reverse remodelling).

The secondary endpoint will be the heart failure clinical composite response.^{29,30} The composite endpoint was developed by Milton Packer²⁹ at 12 month. This is a combined endpoint (QoL, NYHA-class, hospitalization for heart failure and death) that has been extensively used.³¹

Table 2 Echocardiographic parameters or loops that will be mandatory for the analysis or corelab analysis

Parameters/loops	Before implantation	Six-month follow-up
Apical 4-, 2-, 3-ch.views showing LV and LA (3 beats)	+	+
Apical 4-, 2-, 3-ch.view with colour Doppler on valves	+	+
Dedicated loops on the RV in 4-ch.view	+	+
Mitral inflow (E, A, E-DT)	+	+
LVOT VTI (cm)	+	+
e' (septal & lateral) (cm/s)	+	+
s' (septal & lateral) (cm/s)	+	+
TR velocity (m/s)	+	+
RVs' (cm/s)	+	+
LV EF (%)	+	+
GLS (%)	+	+
LVEDD (mm)(parasternal long-axis view)	+	+
LVESD (mm)(parasternal long axis view)	+	+
IVS and PW thickness (mm) (parasternal long-axis view)	+	+
Parasternal long-axis view loop (3 beats)	+	+
Parsternal short-axis view at the level of papillary muscle	+	+
RV outflow tract VTI(cm)	+	+
Inferior vena cava loops (3 beats)	+	+
Optional: 4D volumetric acquisition of the LV over 4 to 6 beats	+	+
Apical 4-Ch. View colour DTI highest frame rate loop (> 2 beats)	+	+

LV, left ventricular; RV, right ventricular; LVEDD, Left ventricular end diastolic diameter; LVESD, left ventricular end systolic diameter; IVS, inter ventricular septum thickness; PW, posterior wall thickness; LVOT, left ventricular outflow tract; TR, tricuspid regurgitation.

Furthermore, event rates for death, hospitalisation for any cardiovascular reason and the clinical improvement (as assessed with the NYHA functional class, the 6 min walking test distance and the improvement in quality of life according to questionnaires used in the Milton Packer score)²⁹ will be recorded.

Echocardiographic data analysis

A complete echocardiography including global longitudinal strain (GLS) will be performed and recorded for a core laboratory analysis. Left atrial (LA) volume, right ventricular (RV) size and function will be recorded according to recommendation (including RV strain free wall).^{27,32}

Assessment of dyssynchrony

Mechanical dyssynchrony will be quantified using a multi-parametric approach (Table 2).

Table 3 Key imaging parameters that will be examined for their ability to predict the response to CRT

Parameters/loops	Before implantation	Six-month follow-up
Localization: amount of LGE	+	
LV volumes and diameters	+	+
Septal flash	+	+
Apical rocking	+	+
Pattern of LV longitudinal strain. ³⁸	+	+
Cardiac work indices	+	+
Strain delay indices (cardiac work, dispersion)	+	+
LA volumes and deformations	+	+
Right ventricular function indices (TAPSE)	+	+
LV mechanical dispersion	+	+

LV, left ventricular; LGE, late gadolinium enhancement.

Intra-ventricular dyssynchrony will be defined by the presence of septal flash³³ and/or apical rocking.³⁴ These two parameters have been previously described and will be assessed qualitatively.^{34,35} Septal flash is a premature and short contraction of the septum during the QRS and then before the aortic valve opening. Apical rocking is a displacement or the LV-apex towards the lateral wall.

Systolic mechanical dispersion will be quantified according to the methodology previously proposed.³⁶

In addition to these two approaches, Mitral inflow pattern, Mitral inflow duration will be measured.³⁷ The pattern of LV-septum deformation will be analysed according to Marechaux *et al.*³⁸

Quantification of cardiac work

Cardiac work will be calculated as a function of time throughout the cardiac cycle from the time-strain curve recordings and the estimated LV pressure. Peak systolic LV pressure will be assumed to be equal to peak arterial pressure measured with cuff manometer, as the average of three recordings. Cardiac work will be assessed by calculating the rate of segmental shortening (strain rate) by differentiation of the strain curve and multiplying this with instantaneous LV-pressure. This product is a measure of instantaneous power, which will be integrated over time to give work as a function of time in systole, defined as the time interval from mitral valve closure to mitral valve opening. Two-dimensional imaging of

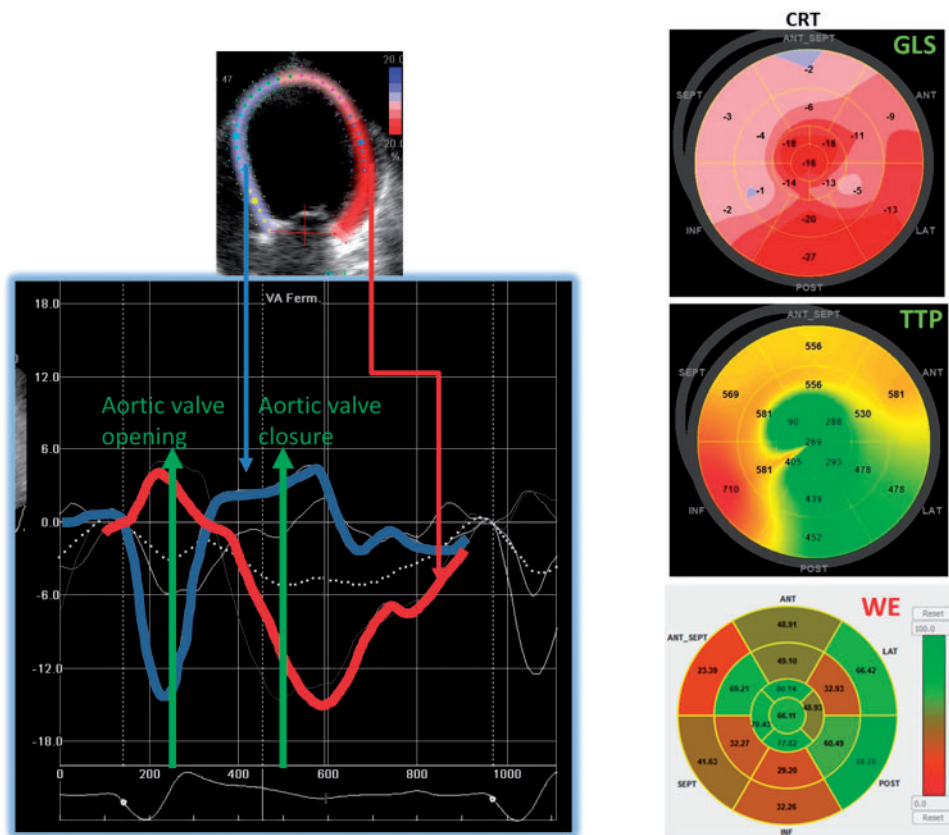


Figure 2 Presentation of the impact of mechanical dyssynchrony on longitudinal strain curves: in blue: the septum with a too early contraction; in red the lateral wall with a delayed contraction. GLS, global longitudinal strain; TTP, time to peak; WE, wasted energy.

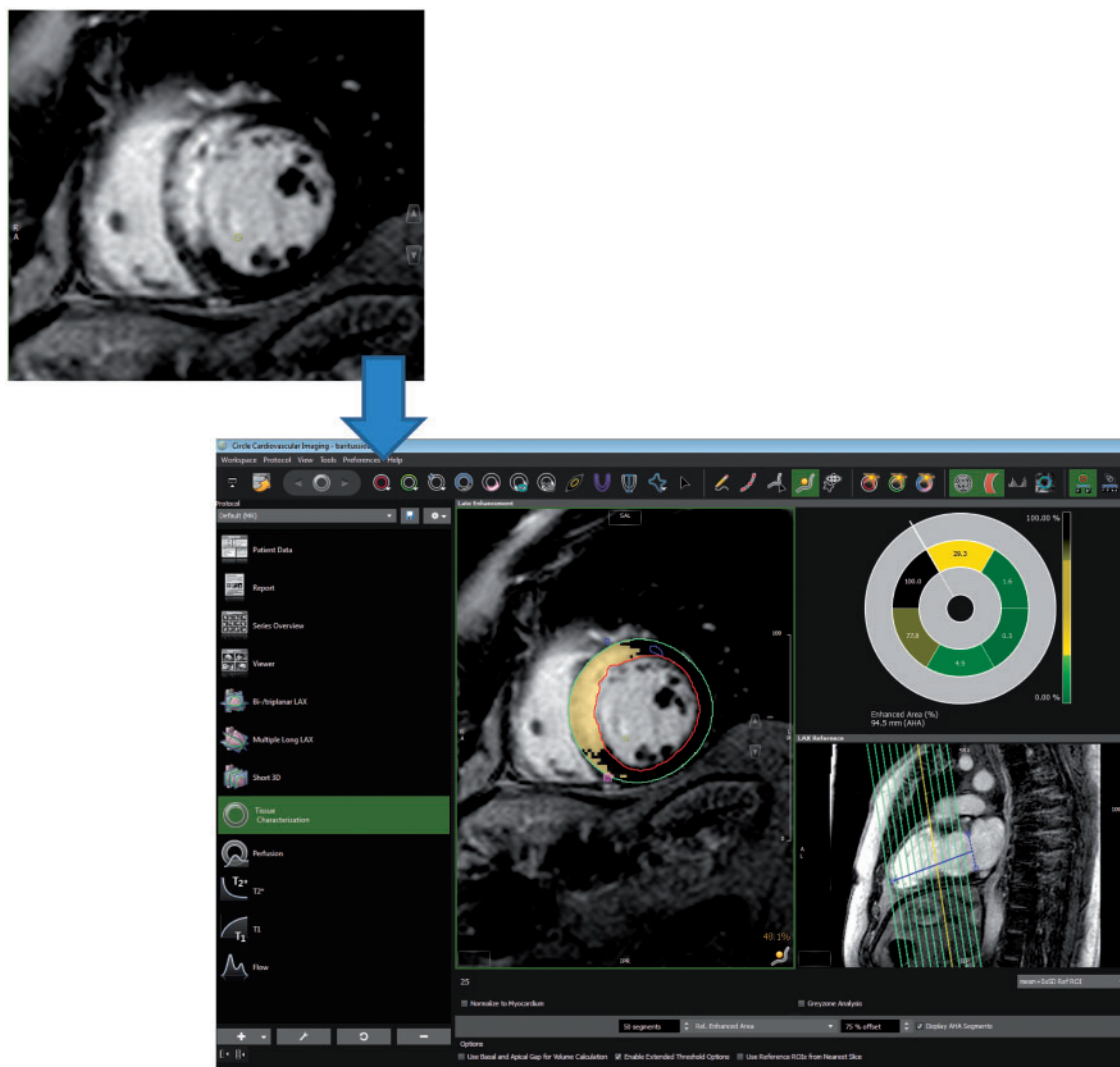


Figure 3 Example of the quantification of the LGE.

mitral and aortic valves in parasternal long-axis view will be used to define timing of opening and closure of the mitral and aortic valves.^{16,20,39,40}

During the LV ejection period, work performed during segmental elongation represents energy loss, defined as negative work (NegW). Work performed during segmental shortening represented positive work (PosW). During isovolumetric relaxation, this is reversed so that work during shortening is considered negative work and work during lengthening is considered positive work. Work efficiency (WE) is defined as $\text{PosW}/(\text{PosW} + \text{NegW}) \times 100$. Global positive, negative, and WE will be reported as the mean values of all LV segments (Figure 2).

Cardiac magnetic resonance imaging

The CMR protocol includes standard long-axis views (3-, 2-, and 4-chamber views) followed by a full stack of continuous short-axis cine encompassing the LV/RV from base to apex using a breath-hold steady-state free precession cine technique. (Figure 3)

LGE-CMR imaging will be performed in the same short- and long-axis cine orientation 10–15 min after administration of 0.1 to 0.2 mmol/kg of gadolinium-chelate contrast agent. Images will be acquired using an inversion recovery prepared breath-hold gradient-echo technique (IR-GRE) following a Lock-Locker T1 shout sequence for the identification of the optimal starting T1 value to null the signal in the normal myocardium. The inversion time will be progressively optimized to null normal myocardium (typical values, 250–350 ms). Each slice will be obtained during a breath hold of 10–15 s depending on the patient's heart rate.

The parameters measured will be LV and RV volumes and ejection fraction. LV fibrosis will be measured using the full-width-half-maximum method of the tissue characterization module, and expressed both in grams and in % of the LV mass, as previously described.⁴¹ The location and numbers of myocardial segments affected by LGE will be recorded; the transmural extent of LGE will visually assessed per segment using a 0–4 score (0 = no LGE, 1 = 0–25% LGE, 2 = 26–50% LGE, 3 = 51–75% LGE, 4 = \geq 75% LGE) and quantify also.

Table 4 Rational and design of EuroCRT: an international observational study on multimodality imaging and cardiac resynchronization therapy

	PROSPECT ¹⁰	RethinQ ²⁶	Echo CRT ²⁷	Euro-CRT objectives
Population	286 out of 498 enrolled	80 out of 172 enrolled	809 out of 1680	250
LVEF (%)	23.6 ± 7.0	26 ± 6	27.0 ± 5.4	≤35%
QRS duration (ms)	163 ± 22	106 ± 13	105 ± 12	>120
Follow-up (months)	6	6	19.4	6
LV end-diastolic	Volume 230 ± 99 ml	Volume 210 ± 75 ml	Diameter 66.1 ± 7.4 mm	Unknown
Use of time to peak indices in tissue Doppler imaging	+	+	-	-
Use of longitudinal strain	-	-	-	+
Use of patterns of LV-regional function and dyssynchrony	-	-	-	+
Use of indices of regional LV myocardial function	-	-	-	+
Use of radial strain	-	-	+	+
Use of M-mode	+	+	-	+
Use of pulse Doppler indices of dyssynchrony	+	+	-	+
Use of any parameter of right ventricular function or pressure	-	-	-	+
Use of CMR	-	-	-	+
Result in term of interest of imaging indices	-	-	-	Unknown

LV, left ventricular; LVEF, left ventricular ejection fraction; CMR, cardiac magnetic resonance.

LV-GLS will be measured from two long-axis cine images using feature-tracking analyses module.

Statistical analysis

The baseline demographic, clinical, echocardiographic, and CMR characteristics will be compared between patients who have met the primary end-point and those remaining free from end points at 12 month. Similar comparison and description will be performed according to secondary end points.

After the normality of the distribution is assessed using the Kolmogorov–Smirnov test, all baseline continuous variables will be compared between the two groups for statistically significant differences using Student's *t*-test or the Mann–Whitney test, as appropriate. Categorical variables will be compared using the χ^2 test or Fisher's exact test. The independent determinant of CRT response will be assessed using logistic regression. Firstly, univariate analyses will be performed, and odds ratios and 95% of confidence intervals (CI) will be reported. Secondly, all univariate variables with a *P*-value <0.10 will be included in a backward stepwise model. Special care will be maintained to avoid collinearity among the included variables. In this regard, variables with a high degree of collinearity will be selected according to the best univariate *P*-value. Final variables identified as independently associated with the CRT-response will be confronted to the previously established predictive score (i.e., the Bernard *et al.* score⁴²). According to the current literature and our experience, we anticipate including up to six variables (with low collinearity) from the dyssynchrony analysis and CMR parameters in the logistic regression model aiming to identify the independent determinants of non-response.

From the literature, the expected response rate to CRT is 70%. According to the main secondary endpoint (reduction in LVESV of at least 15%), the rate response is 50% in the SEPTAL CRT trial, resulting

in 50–40% of patients potentially non-responders, according to the LV reverse remodelling criteria.⁴³ Consequently, using a ratio of 10 non-responders for each selected variable, a minimal number of 70 non-responders are needed to appropriately answer the primary objective of the observational study. This results in a calculated total sample size of 234 for an expected non-response rate of 30%. We aim to recruit 250 patients to account for missing data or loss of follow-up.

Discussion

Imaging modalities have been tested previously and have not met the clinical expectations in improving the selection of candidates for CRT.^{8,44,45} Nevertheless, new evidence on the role of imaging to select patients for CRT is encouraging.^{34,46–48} In particular, modern multi-modality imaging approaches have the potential to improve the selection of candidates for CRT (Table 4). From previous studies,^{21,25} it has been shown that the presence of myocardial scar is an important determinant of response to CRT. However, its integration in a multi-parametric approach to select patients for CRT has not been evaluated in large prospective multi-centre studies using dedicated core labs for ultrasound and CMR studies.

By using echocardiography, new approaches for quantifying the mechanical dyssynchrony have been proposed.³³ There are also issues that are not completely resolved like the relevance of right ventricular function, of secondary mitral regurgitation or left atrial size.^{49–51} Mechanical dispersion is also something that remains to be explored in a large series of patients treated by CRT.³⁶ Mechanical dyssynchrony parameters can nowadays be quite automatically computed and are taking advantage of the past studies and a better

understanding of the pathophysiology.⁵² The strain delay index has been proposed and tested in the multi-centre MUSIC-trial involving 235 patients treated by CRT. The results were clearly encouraging.¹² There are important results published with the cardiac work indices obtained by computing longitudinal strain curves.⁵³ In EuroCRT, we will consider an approach combining the timing and the amount of segmental deformation using the cardiac work indices previously described.^{16,20} In addition, the septal flash and apical rocking are two semi-quantitative approaches that are easy to apply and to test.^{33,54,55} These simple approaches have been tested and validated in some studies but their relative value with respect to the quantitative assessment of the cardiac wasted work has not been tested in any large multicentre study. It has been decided to use only one sort of echomachine to increase to robustness. In addition, the centralized reviewing of the images will be extremely useful to assess the relative reproducibility of the 'automatically' calculated parameters extracted from strain curves against the variability of the septal flash and the apical rocking (i.e. comparing corelab vs, individual labs involved in EuroCRT).³⁴

Conclusion

EuroCRT will be the first large multi-centre European prospective observational international study to test the role of CMR and modern echocardiographic-updated parameters to predict the response to CRT among patients implanted according to the current guidelines.

Conflict of interest: None declared.

Funding

C.B.D. is supported by the Bristol NIHR Cardiovascular Biomedical Research Unit. This article presents independent research funded by the National Institute for Health Research (NIHR). The views expressed are those of the authors and not necessarily those of the NHS, the NIHR or the Department of Health. E.D. received a grant from General Electric healthcare.

References

- Risum N, Tayal B, Hansen TF, Bruun NE, Jensen MT, Lauridsen TK et al. Identification of typical left bundle branch block contraction by strain echocardiography is additive to electrocardiography in prediction of long-term outcome after cardiac resynchronization therapy. *J Am Coll Cardiol* 2015;**66**:631–41.
- Vidal B, Delgado V, Mont L, Poyatos S, Silva E, Angeles Castel M et al. Decreased likelihood of response to cardiac resynchronization in patients with severe heart failure. *Eur J Heart Fail* 2010;**12**:283–7.
- Silva E, Sitges M, Doltra A, Mont L, Vidal B, Castel MA et al. Analysis of temporal delay in myocardial deformation throughout the cardiac cycle: utility for selecting candidates for cardiac resynchronization therapy. *Heart Rhythm* 2010;**7**:1580–6.
- Voigt JU. Cardiac resynchronization therapy responders can be better identified by specific signatures in myocardial function. *Eur Heart J Cardiovasc Imaging* 2016;**17**:132–354.
- Vardas PE, Auricchio A, Blanc JJ, Daubert JC, Drexler H, Ector H et al. Guidelines for cardiac pacing and cardiac resynchronization therapy: the Task Force for Cardiac Pacing and Cardiac Resynchronization Therapy of the European Society of Cardiology. Developed in collaboration with the European Heart Rhythm Association. *Eur Heart J* 2007;**28**:2256–95.
- Ponikowski P, Voors AA, Anker SD, Bueno H, Cleland JG, Coats AJ et al. 2016 ESC Guidelines for the diagnosis and treatment of acute and chronic heart failure: The Task Force for the diagnosis and treatment of acute and chronic heart failure of the European Society of Cardiology (ESC) Developed with the special contribution of the Heart Failure Association (HFA) of the ESC. *Eur Heart J* 2016;**37**:2129–200.
- Brignole M, Auricchio A, Baron-Esquivas G, Bordachar P, Boriani G, Breithardt OA et al. 2013 ESC Guidelines on cardiac pacing and cardiac resynchronization therapy: the Task Force on cardiac pacing and resynchronization therapy of the European Society of Cardiology (ESC). Developed in collaboration with the European Heart Rhythm Association (EHRA). *Eur Heart J* 2013;**34**:2281–329.
- Chung ES, Leon AR, Tavazzi L, Sun JP, Nihoyannopoulos P, Merlino J et al. Results of the Predictors of Response to CRT (PROSPECT) trial. *Circulation* 2008;**117**:2608–16.
- Gorcsan J, 3rd, Abraham T, Agler DA, Bax JJ, Derumeaux G, Grimm RA et al. Echocardiography for cardiac resynchronization therapy: recommendations for performance and reporting—a report from the American Society of Echocardiography Dyssynchrony Writing Group endorsed by the Heart Rhythm Society. *J Am Soc Echocardiogr* 2008;**21**:191–213.
- Bax JJ, Abraham T, Barold SS, Breithardt OA, Fung JW, Garrigue S et al. Cardiac resynchronization therapy: part 1—issues before device implantation. *J Am Coll Cardiol* 2005;**46**:2153–67.
- Pouleur AC, Knappe D, Shah AM, Uno H, Bourgoun M, Foster E et al. Relationship between improvement in left ventricular dyssynchrony and contractile function and clinical outcome with cardiac resynchronization therapy: the MADIT-CRT trial. *Eur Heart J* 2011;**32**:1720–9.
- Lim P, Donal E, Lafitte S, Derumeaux G, Habib G, Reant P et al. Multicentre study using strain delay index for predicting response to cardiac resynchronization therapy (MUSIC study). *Eur J Heart Fail* 2011;**13**:984–91.
- Lumens J, Ploux S, Strik M, Gorcsan J, 3rd, Cochet H, Derval N et al. Comparative electromechanical and hemodynamic effects of left ventricular and biventricular pacing in dyssynchronous heart failure: electrical resynchronization versus left-right ventricular interaction. *J Am Coll Cardiol* 2013;**62**:2395–403.
- Bernard A, Donal E, Leclercq C, Schnell F, Fournet M, Reynaud A et al. Impact of cardiac resynchronization therapy on left ventricular mechanics: understanding the response through a new quantitative approach based on longitudinal strain integrals. *J Am Soc Echocardiogr* 2015;**28**:700–8.
- Boe E, Russell K, Remme EW, Gjesdal O, Smiseth OA, Skulstad H. Cardiac responses to left ventricular pacing in hearts with normal electrical conduction: beneficial effect of improved filling is counteracted by dyssynchrony. *Am J Physiol Heart Circ Physiol* 2014;**307**:H370–8.
- Russell K, Eriksen M, Aaberge L, Wilhelmsen N, Skulstad H, Remme EW et al. A novel clinical method for quantification of regional left ventricular pressure-strain loop area: a non-invasive index of myocardial work. *Eur Heart J* 2012;**33**:724–33.
- Vaillant C, Martins RP, Donal E, Leclercq C, Thebault C, Behar N et al. Resolution of left bundle branch block-induced cardiomyopathy by cardiac resynchronization therapy. *J Am Coll Cardiol* 2013;**61**:1089–95.
- Risum N, Strauss D, Sogaard P, Loring Z, Hansen TF, Bruun NE et al. Left bundle-branch block: the relationship between electrocardiogram electrical activation and echocardiography mechanical contraction. *Am Heart J* 2013;**166**:340–8.
- Kirn B, Jansen A, Bracke F, van Gelder B, Arts T, Prinzen FW. Mechanical discoordination rather than dyssynchrony predicts reverse remodeling upon cardiac resynchronization. *Am J Physiol Heart Circ Physiol* 2008;**295**:H640–6.
- Russell K, Eriksen M, Aaberge L, Wilhelmsen N, Skulstad H, Gjesdal O et al. Assessment of wasted myocardial work: a novel method to quantify energy loss due to uncoordinated left ventricular contractions. *Am J Physiol Heart Circ Physiol* 2013;**305**:H996–1003.
- Marsan NA, Westenberg JJ, Ypenburg C, van Bommel RJ, Roes S, Delgado V et al. Magnetic resonance imaging and response to cardiac resynchronization therapy: relative merits of left ventricular dyssynchrony and scar tissue. *Eur Heart J* 2009;**30**:2360–7.
- Ypenburg C, van Bommel RJ, Delgado V, Mollema SA, Bleeker GB, Boersma E et al. Optimal left ventricular lead position predicts reverse remodeling and survival after cardiac resynchronization therapy. *J Am Coll Cardiol* 2008;**52**:1402–9.
- Ypenburg C, Schaliij MJ, Bleeker GB, Steendijk P, Boersma E, Dibbets-Schneider P et al. Impact of viability and scar tissue on response to cardiac resynchronization therapy in ischaemic heart failure patients. *Eur Heart J* 2007;**28**:33–41.
- Bilchick KC, Dimaano V, Wu KC, Helm RH, Weiss RG, Lima JA et al. Cardiac magnetic resonance assessment of dyssynchrony and myocardial scar predicts function class improvement following cardiac resynchronization therapy. *JACC Cardiovasc Imaging* 2008;**1**:561–8.
- Delgado V, van Bommel RJ, Bertini M, Borleffs CJ, Marsan NA, Arnold CT et al. Relative merits of left ventricular dyssynchrony, left ventricular lead position, and myocardial scar to predict long-term survival of ischemic heart failure patients undergoing cardiac resynchronization therapy. *Circulation* 2011;**123**:70–8.
- Strauss DG, Selvester RH, Wagner GS. Defining left bundle branch block in the era of cardiac resynchronization therapy. *Am J Cardiol* 2011;**107**:927–34.
- Lang RM, Badano LP, Mor-Avi V, Afilalo J, Armstrong A, Ernande L et al. Recommendations for cardiac chamber quantification by echocardiography in adults: an update from the American Society of Echocardiography and the

- European Association of Cardiovascular Imaging. *Eur Heart J Cardiovasc Imaging* 2015;**16**:233–70.
28. Cosyns B, Garbi M, Separovic J, Pasquet A, Lancellotti P. Education Committee of the European Association of Cardiovascular Imaging Association (EACVI). Update of the echocardiography core syllabus of the European Association of Cardiovascular Imaging (EACVI). *Eur Heart J Cardiovasc Imaging*. 2013;**14**:837–9.
 29. Packer M. Proposal for a new clinical end point to evaluate the efficacy of drugs and devices in the treatment of chronic heart failure. *J Card Fail* 2001;**7**:176–82.
 30. Linde C, Gold M, Abraham WT, Daubert JC, Group RS. Rationale and design of a randomized controlled trial to assess the safety and efficacy of cardiac resynchronization therapy in patients with asymptomatic left ventricular dysfunction with preceding symptoms or mild heart failure—the REsynchronization REverses Remodeling in Systolic left vEntricular dysfunction (REVERSE) study. *Am Heart J* 2006;**151**:288–94.
 31. Okumura N, Jhund PS, Gong J, Lefkowitz MP, Rizkala AR, Rouleau JL *et al*. Importance of Clinical Worsening of Heart Failure Treated in the Outpatient Setting: Evidence From the Prospective Comparison of ARNI With ACEI to Determine Impact on Global Mortality and Morbidity in Heart Failure Trial (PARADIGM-HF). *Circulation* 2016;**133**:2254–62.
 32. Rudski LG, Lai WW, Afilalo J, Hua L, Handschumacher MD, Chandrasekaran K *et al*. Guidelines for the echocardiographic assessment of the right heart in adults: a report from the American Society of Echocardiography endorsed by the European Association of Echocardiography, a registered branch of the European Society of Cardiology, and the Canadian Society of Echocardiography. *J Am Soc Echocardiogr* 2010;**23**:685–713; quiz 86–8.
 33. Parsai C, Bijns B, Sutherland GR, Baltabaeva A, Claus P, Marciniak M *et al*. Toward understanding response to cardiac resynchronization therapy: left ventricular dyssynchrony is only one of multiple mechanisms. *Eur Heart J* 2009;**30**:940–9.
 34. Stankovic I, Prinz C, Ciarka A, Daraban AM, Kotrc M, Aarones M *et al*. Relationship of visually assessed apical rocking and septal flash to response and long-term survival following cardiac resynchronization therapy (PREDICT-CRT). *Eur Heart J Cardiovasc Imaging* 2016;**17**:262–9.
 35. Szulik M, Tillekaerts M, Vangeel V, Ganame J, Willems R, Lenarczyk R *et al*. Assessment of apical rocking: a new, integrative approach for selection of candidates for cardiac resynchronization therapy. *Eur J Echocardiogr* 2010;**11**:863–9.
 36. Hasselberg NE, Haugaa KH, Bernard A, Ribe MP, Kongsgaard E, Donal E *et al*. Left ventricular markers of mortality and ventricular arrhythmias in heart failure patients with cardiac resynchronization therapy. *Eur Heart J Cardiovasc Imaging* 2016;**17**:343–50.
 37. Cazeau S, Gras D, Lazarus A, Ritter P, Mugica J. Multisite stimulation for correction of cardiac asynchrony. *Heart* 2000;**84**:579–81.
 38. Marechaux S, Guiot A, Castel AL, Guyomar Y, Semichon M, Delelis F *et al*. Relationship between two-dimensional speckle-tracking septal strain and response to cardiac resynchronization therapy in patients with left ventricular dysfunction and left bundle branch block: a prospective pilot study. *J Am Soc Echocardiogr* 2014;**27**:501–11.
 39. Smiseth OA, Russell K, Skulstad H. The role of echocardiography in quantification of left ventricular dyssynchrony: state of the art and future directions. *Eur Heart J Cardiovasc Imaging* 2012;**13**:61–8.
 40. Russell K, Smiseth OA, Gjesdal O, Qvigstad E, Norseng PA, Sjaastad I *et al*. Mechanism of prolonged electromechanical delay in late activated myocardium during left bundle branch block. *Am J Physiol Heart Circ Physiol* 2011;**301**:H2334–43.
 41. Gao P, Yee R, Gula L, Krahn AD, Skanes A, Leong-Sit P *et al*. Prediction of arrhythmic events in ischemic and dilated cardiomyopathy patients referred for implantable cardiac defibrillator: evaluation of multiple scar quantification measures for late gadolinium enhancement magnetic resonance imaging. *Circ Cardiovasc Imaging* 2012;**5**:448–56.
 42. Brunet-Bernard A, Marechaux S, Fauchier L, Guiot A, Fournet M, Reynaud A *et al*. Combined score using clinical, electrocardiographic, and echocardiographic parameters to predict left ventricular remodeling in patients having had cardiac resynchronization therapy six months earlier. *Am J Cardiol* 2014;**113**:2045–51.
 43. Leclercq C, Sadoul N, Mont L, Defaye P, Osca J, Mouton E *et al*. Comparison of right ventricular septal pacing and right ventricular apical pacing in patients receiving cardiac resynchronization therapy defibrillators: the SEPTAL CRT Study. *Eur Heart J* 2016;**37**:473–83.
 44. Beshai JF, Grimm RA, Nagueh SF, Baker JH, 2nd, Beau SL, Greenberg SM *et al*. Cardiac-resynchronization therapy in heart failure with narrow QRS complexes. *N Engl J Med* 2007;**357**:2461–71.
 45. Ruschitzka F, Abraham WT, Singh JP, Bax JJ, Borer JS, Brugada J *et al*. Cardiac-resynchronization therapy in heart failure with a narrow QRS complex. *N Engl J Med* 2013;**369**:1395–405.
 46. Lumens J, Prinzen FW, Delhaas T. Longitudinal strain: “think globally, track locally”. *JACC Cardiovasc Imaging* 2015;**8**:1360–3.
 47. Lumens J, Vernoooy K. Better understanding before implanting. *Int J Cardiol* 2015;**184**:6–8.
 48. Voigt JU. Cardiac resynchronization therapy responders can be better identified by specific signatures in myocardial function. *Eur Heart J Cardiovasc Imaging* 2016;**17**:132–3.
 49. Damy T, Ghio S, Rigby AS, Hittinger L, Jacobs S, Leyva F *et al*. Interplay between right ventricular function and cardiac resynchronization therapy: an analysis of the CARE-HF trial (Cardiac Resynchronization-Heart Failure). *J Am Coll Cardiol* 2013;**61**:2153–60.
 50. Feneon D, Behaghel A, Bernard A, Fournet M, Mabo P, Daubert JC *et al*. Left atrial function, a new predictor of response to cardiac resynchronization therapy? *Heart Rhythm* 2015;**12**:1800–6.
 51. van Bommel RJ, Marsan NA, Delgado V, Borleffs CJ, van Rijnsoever EP, Schalij MJ *et al*. Cardiac resynchronization therapy as a therapeutic option in patients with moderate-severe functional mitral regurgitation and high operative risk. *Circulation* 2011;**124**:912–9.
 52. Khidir MJ, Delgado V, Ajmone Marsan N, Bax JJ. Mechanical dyssynchrony in patients with heart failure and reduced ejection fraction: how to measure? *Curr Opin Cardiol* 2016;**31**:523–30.
 53. Vecera J, Penicka M, Eriksen M, Russell K, Bartunek J, Vanderheyden M *et al*. Wasted septal work in left ventricular dyssynchrony: a novel principle to predict response to cardiac resynchronization therapy. *Eur Heart J Cardiovasc Imaging* 2016;**17**:624–32.
 54. Stankovic I, Prinz C, Ciarka A, Daraban AM, Kotrc M, Aarones M *et al*. Relationship of visually assessed apical rocking and septal flash to response and long-term survival following cardiac resynchronization therapy (PREDICT-CRT). *Eur Heart J Cardiovasc Imaging* 2016;**17**:262–69.
 55. Ghani A, Delnoy PP, Ottervanger JP, Ramdat Misier AR, Smit JJ, Adiyaman A *et al*. Association of apical rocking with long-term major adverse cardiac events in patients undergoing cardiac resynchronization therapy. *Eur Heart J Cardiovasc Imaging* 2016;**17**:146–53.